

### Self-locking Nylon Cable Ties

**Material:**  
Nylon 66, 94V-2 certified by UL, heat-resisting, erosion control, insulate well and not apt to age.  
**Color:**  
Natural (or white, standard color), black and other colors are available as requested.

Type	L		W(mm)	Bundle Diameter (mm)	Tensile strength	
	Inch	mm			lbs	kgs
HY1-1-25080	3/316"	80	2.5	2-16	18	8
HY1-1-25100	4"	100		2-22		
HY1-1-25120	4 3/4"	120		2-30		
HY1-1-25150	6"	150		2-35		
HY1-1-25180	6 1/4"	160		2-40		
HY1-1-25200	8"	200	2-50	3.6	40	18
HY1-1-36140	5 1/2"	140	3-33			
HY1-1-36150	6"	150	3-35			
HY1-1-36180	7"	180	3-42			
HY1-1-36200	8"	200	3-50			
HY1-1-36250	10"	250	3-65			
HY1-1-36280	11"	280	3-70			
HY1-1-36300	11 5/8"	300	3-80			
HY1-1-36370	14 3/5"	370	3-105			
HY1-1-48120	4 3/4"	120	3-30			
HY1-1-48150	6"	150	3-35			
HY1-1-48160	6 1/4"	160	3-37			
HY1-1-48180	7"	180	3-42			
HY1-1-48190	7 1/2"	190	3-46			
HY1-1-48200	8"	200	3-50			
HY1-1-48250	10"	250	3-65			
HY1-1-48280	11"	280	3-70			
HY1-1-48300	11 5/8"	300	3-82			
HY1-1-48350	13 3/4"	350	3-90			
HY1-1-48370	14 3/5"	370	3-98			
HY1-1-48380	15"	380	3-102			
HY1-1-48400	15 3/4"	400	3-105			



Type	L		W(mm)	Bundle Diameter (mm)	Tensile strength				
	Inch	mm			lbs	kgs			
HY1-1-48430	17"	430	4.8	3-110	50	22			
HY1-1-48450	17 3/4"	450		3-130					
HY1-1-48500	19 11/16"	500		3-150					
HY1-1-72200	8"	200	7.2	3-50	120	55			
HY1-1-72250	10"	250		4-63					
HY1-1-72300	11 5/8"	300		4-82					
HY1-1-72350	13 3/4"	350		4-90					
HY1-1-72370	14 3/5"	370		4-98					
HY1-1-72380	15"	380		4-100					
HY1-1-72400	15 3/4"	400		4-105					
HY1-1-72450	17 3/4"	450		4-110					
HY1-1-72500	19 11/16"	500		4-150					
HY1-1-72530	20 3/4"	530		4-155					
HY1-1-72550	21 1/16"	550	4-160	7.6	120	55			
HY1-1-76300	11 5/8"	300	4-82						
HY1-1-76350	13 3/4"	350	4-90						
HY1-1-76400	15 3/4"	400	4-105						
HY1-1-76450	17 3/4"	450	4-118						
HY1-1-76500	19 11/16"	500	4-150						
HY1-1-76550	21 1/16"	550	4-160						
HY1-1-90400	15 3/4"	400	4-105				9.0	175	80
HY1-1-90450	17 3/4"	450	8-118						
HY1-1-90500	19 11/16"	500	8-150						
HY1-1-90550	21 1/16"	550	8-160						
HY1-1-90600	23 5/8"	600	8-170						
HY1-1-90650	25 9/16"	650	8-190						
HY1-1-90700	27 1/2"	700	10-205						
HY1-1-90750	29 9/16"	750	10-220						
HY1-1-90800	31 1/2"	800	10-230						
HY1-1-90900	35 1/2"	900	10-265						
HY1-1-120600	23 5/8"	600	14-170	12.0	250	114			
HY1-1-12650	25 9/16"	650	14-190						
HY1-1-12750	29 9/16"	750	14-220						
HY1-1-12900	35 1/2"	900	14-265						



### Cable Ties



#### Movable Nylon Cable Ties

**Material:**  
Nylon 66, 94V-2 qualified by UL, resistance to acids and alkalis, not apt to age.

**Color:**  
Black (objective color also provided).

**Character:**  
May be loosen again, and used repeatedly.



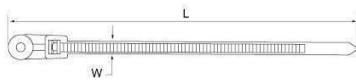
Type	L		W (mm)	Max. bundle dia. (mm)	Tensile strength	
	Inch	mm			lbs	kgs
HY-150	6"	150	7.6	35	50	22
HY-170	7"	170	6.5	40	40	18
HY-200	8"	200	7.6	50	50	22
HY-250	10"	250	7.6	65	50	22
HY-250-1	10"	250	7.6	65	50	22
HY-300	12"	300	7.6	80	50	22
HY-350	13 3/4"	350	7.6	90	50	22



#### Mountable Head Ties

**Material:**  
Nylon 66 certified by UL.

**Usage:**  
After bundling wires, fix them on plate with screw.

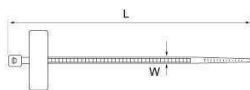


Type	L		W (mm)	内孔 (mm)	Max. bundle dia. (mm)	Tensile strength	
	Inch	mm				lbs	kgs
HY-150	6"	150	3.6	3.5	32	40	18
HY-200	8"	200	4.8	5.0	42	50	22

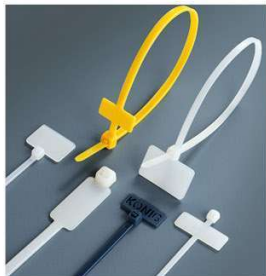
#### Brand Plate Type Cable Ties

**Material:**  
Nylon 66, 94V-2 certified by UL, heat-resisting, erosion control, insulate well and not apt to age.

**Color:**  
Natural (or white, standard color), black and other colors are available as requested.



Type	L		W (mm)	Max. bundle dia. (mm)	Min tensile strength		Size
	Inch	mm			lbs	kgs	
HY-3×100L	4"	110	2.5	22	18	8	20×13
HY-3×100	4"	100	2.5	22	18	8	20×10
HY-4×150	6"	150	3.6	35	40	18	25×15
HY-4×200	8"	200	3.6	50	40	18	25×15



#### Knot Ties Ball Type

**Material:**  
Made of UL approved nylon PA (nature color), fireproof grade is 94V-2.

**Usage:**  
Tied by general wire, it can loose again to repeat usage.

Type	L		Max. bundle dia. (mm)	Packing
	Inch	mm		
HY-100	4"	107	25	1000PCS
HY-120	4.7"	120	30	
HY-160	6.3"	160	40	
HY-165	6.5"	165	42	
HY-180	7.1"	180	50	
HY-215	8.5"	215	55	

#### Fish Bone Shape Head Ties

**Material:**  
Made of PE material, nature is white, also prepared black.

**How to use:**  
First the wire passes through A, connect the binding band with wire, then roll the wire, tie binding band.

**Application:**  
Drawing for general wire.



Type	L(mm)	W(mm)	Max. bundle dia. (mm)	Packing
HY-140	140	9	35	1000PCS
HY-160	160	9	40	
HY-160	160	4	40	
HY-200	200	9	50	
HY-210	210	9	55	

#### Trapezia Type

**Material:**  
Made of PE material, nature is white, also prepared black.

**How to use:**  
First the wire passes through A, connect the binding band with wire, then roll the wire, tie binding band.

**Application:**  
Drawing for general wire.



Type	L(mm)	W(mm)	Max. bundle dia. (mm)	Packing
HY-100	100	9	22	1000PCS
HY-125	125	9	30	
HY-140	140	9	37	
HY-150	150	9	40	
HY-180	180	9	50	
HY-210	210	9	53	
HY-300	300	4	80	



### Lead Sealing Ties

**Material:**  
Made of UL approved NYLON 66 (nature color), fireproof grade is 94V-2.

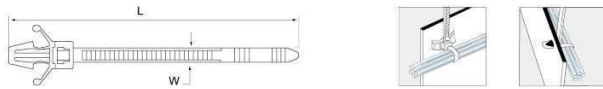
**Feature:**  
It is suitable for identifying the lead seal of postal service, pHYCAL distribution, bank, transportation package. The nameplate size is changed or customized according to customer requirement.

Type	L(mm)	W(mm)	Max. bundle dia. (mm)	Tensile strength	Nameplate
HY-230	230	4.0	37	20	39.5×12
HY-280	280	7.3	60	55	25×22

### Push Mount Ties

**Material:**  
Nylon 66, 94V-2, agreed by UL. Acid and corrode resisting, insulate, last long and not apt to age.

**Usage:**  
Insert tie to the hole of table and tighten it.

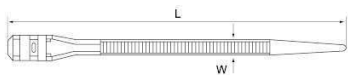


Type	L		W(mm)	Max. bundle dia. (mm)	Min tensile strength		Packing
	Inch	mm			lbs	kgs	
HY-100	4"	110	2.5	22	18	8	100PCS
HY-150	6"	155	3.6	35	40	18	
HY-170	6.6/9"	170	8	37	40	18	
HY-150	6"	150	8	35	40	18	

### Double Locking Cable Ties

**Material:**  
Nylon 12 94-2 certified by UL. Acid-control and not easy to age.

**Usage:**  
Double locking, strong supporting capacity



Type	L		W(mm)	Max. bundle dia. (mm)	Min tensile strength	
	Inch	mm			lbs	kgs
HY-115DL	5 1/8"	115	6.0	22	77	35
HY-180DL	7"	180	6.0	45	77	35
HY-180DDL	7"	180	9.0	45	88	40
HY-260DL	10 1/4"	260	9.0	66	110	50
HY-350DL	13 5/8"	350	9.0	90	110	50



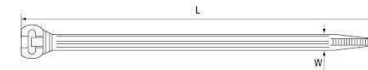
### Nylon Stainless Steel Inlay Blockties

**Material:**  
Nylon 66, 94V-2 certified by UL, fireproof grade 94V-2, acid, durability is not easy to aging, to withstand strong

**Color:**  
Natural (or white, standard color), also prepared UV resistant black

**Use:**  
Both indoor and outdoor application, very easy and quick installation

**Operating temperature:**  
-40 °C ~ 85 °C

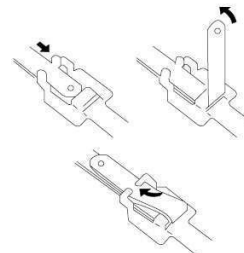


Type	Approx. length mm(inch)	Approx. width mm(inch)	Max bundle dia. mm(inch)	Min loop tensile strength N(lbs)
3×100	100(3.94)	3(0.118)	22(0.87)	80(18)
4×150	150(5.91)	4(0.157)	35(1.38)	160(36)
4×200	200(7.87)	4(0.157)	53(2.09)	160(36)
5×250	250(9.84)	5(0.197)	65(2.56)	200(45)
5×300	300(11.81)	5(0.197)	76(2.99)	200(45)
5×380	380(14.96)	5(0.197)	102(4.02)	200(45)
6×200	200(7.87)	6(0.236)	53(2.09)	220(49.5)
7×300	300(11.81)	7(0.276)	76(2.99)	250(56.3)
8×145	145(5.7)	8(0.315)	34(1.33)	250(56.3)
8×175	175(6.89)	8(0.315)	43(1.69)	250(56.3)
8×200	200(7.87)	8(0.315)	53(2.09)	250(56.3)
8×240	240(9.45)	8(0.315)	64(2.52)	250(56.3)
8×300	300(11.81)	8(0.315)	76(2.99)	250(56.3)
8×400	400(15.75)	8(0.315)	102(4.02)	500(112.5)
10×300	300(11.81)	10(0.394)	76(2.99)	500(112.5)
10×350	350(13.78)	10(0.394)	97(3.82)	500(112.5)
10×400	400(15.75)	10(0.394)	102(4.02)	550(123.7)
10×450	450(17.72)	10(0.394)	120(4.72)	550(123.7)
10×600	600(23.62)	10(0.394)	186(7.32)	550(123.7)



### Stainless Steel Epoxy Coated Cable Tie-Reusable Type

Install



Type	Approx. length mm(inch)	Approx. width mm(inch)	Max. bundle dia. mm(inch)	Min. loop tensile strength N(lbs)
HY-10×150	150(5.9)	10(0.39)	33(1.3)	1000(225)
HY-10×180	190(7.5)		48(1.8)	
HY-10×250	250(9.8)		65(2.6)	
HY-10×300	300(11.8)		81(3.2)	
HY-10×350	350(13.8)		97(3.8)	
HY-10×400	400(15.7)		113(4.4)	
HY-10×450	450(17.7)		129(5.1)	
HY-10×490	490(19.3)		141(5.6)	
HY-10×550	550(21.7)		161(6.3)	
HY-10×600	600(23.6)		176(6.9)	
HY-10×650	650(25.6)	192(7.6)		
HY-10×700	700(27.6)	208(8.2)		